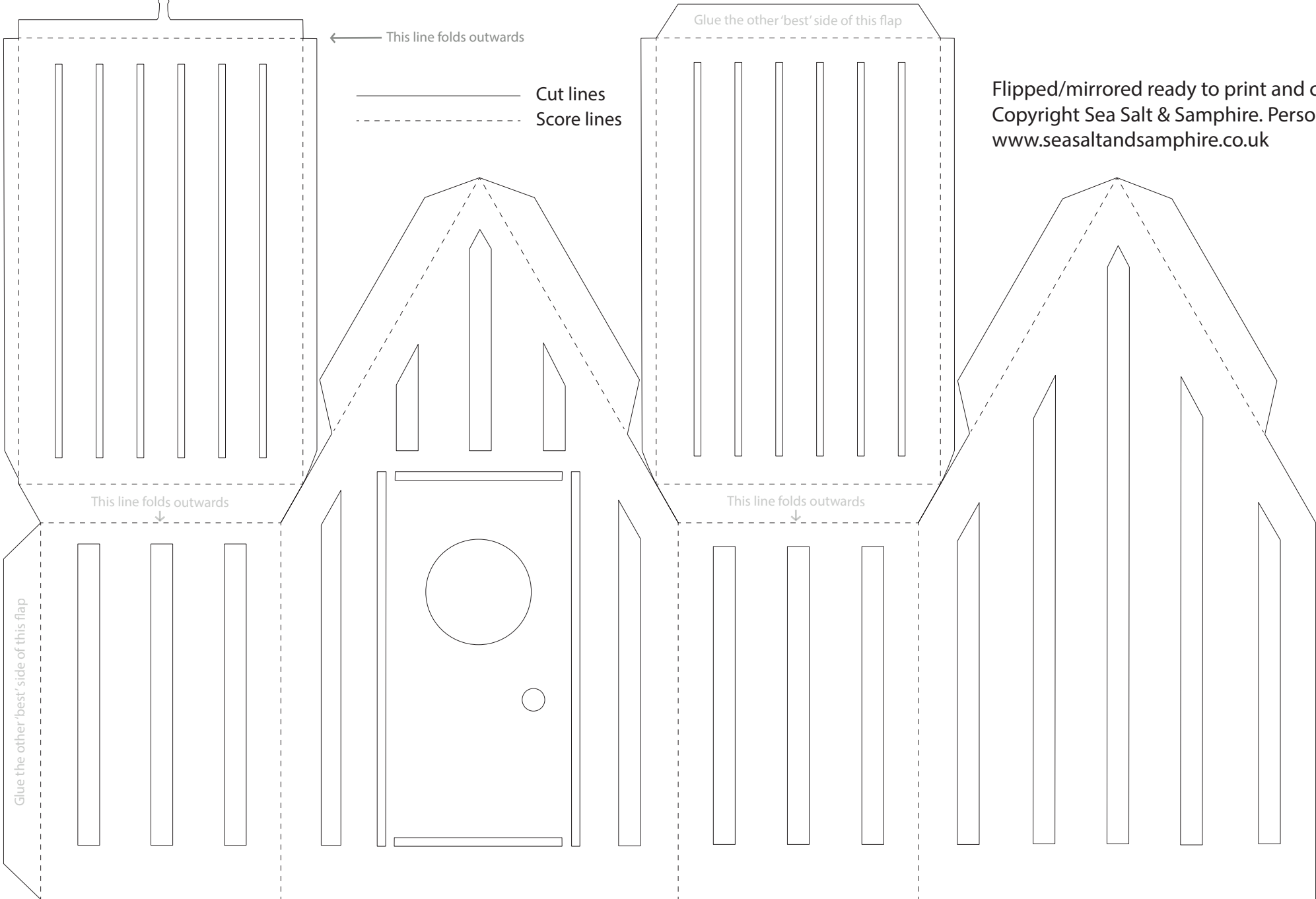


Fold all score lines inwards on the hut and EXCEPT the roofline and the scorelines where the very bottom of the roof panels meet the walls as these create the 'eaves'. Next flip the house over and add glue to the 'best' side of the two flaps indicated. The flaps on the apexes which go under the roof do not need to be glued, they are there to ensure everything tucks away neatly. You can then stick the hut together. You can then place the hut over a battery tea light. Do NOT place the lantern anywhere near a real tealight or naked flame!



← This line folds outwards

— Cut lines
- - - Score lines

Glue the other 'best' side of this flap

Flipped/mirrored ready to print and cut.
Copyright Sea Salt & Samphire. Personal use only.
www.seasaltandsamphire.co.uk

This line folds outwards

This line folds outwards

Glue the other 'best' side of this flap